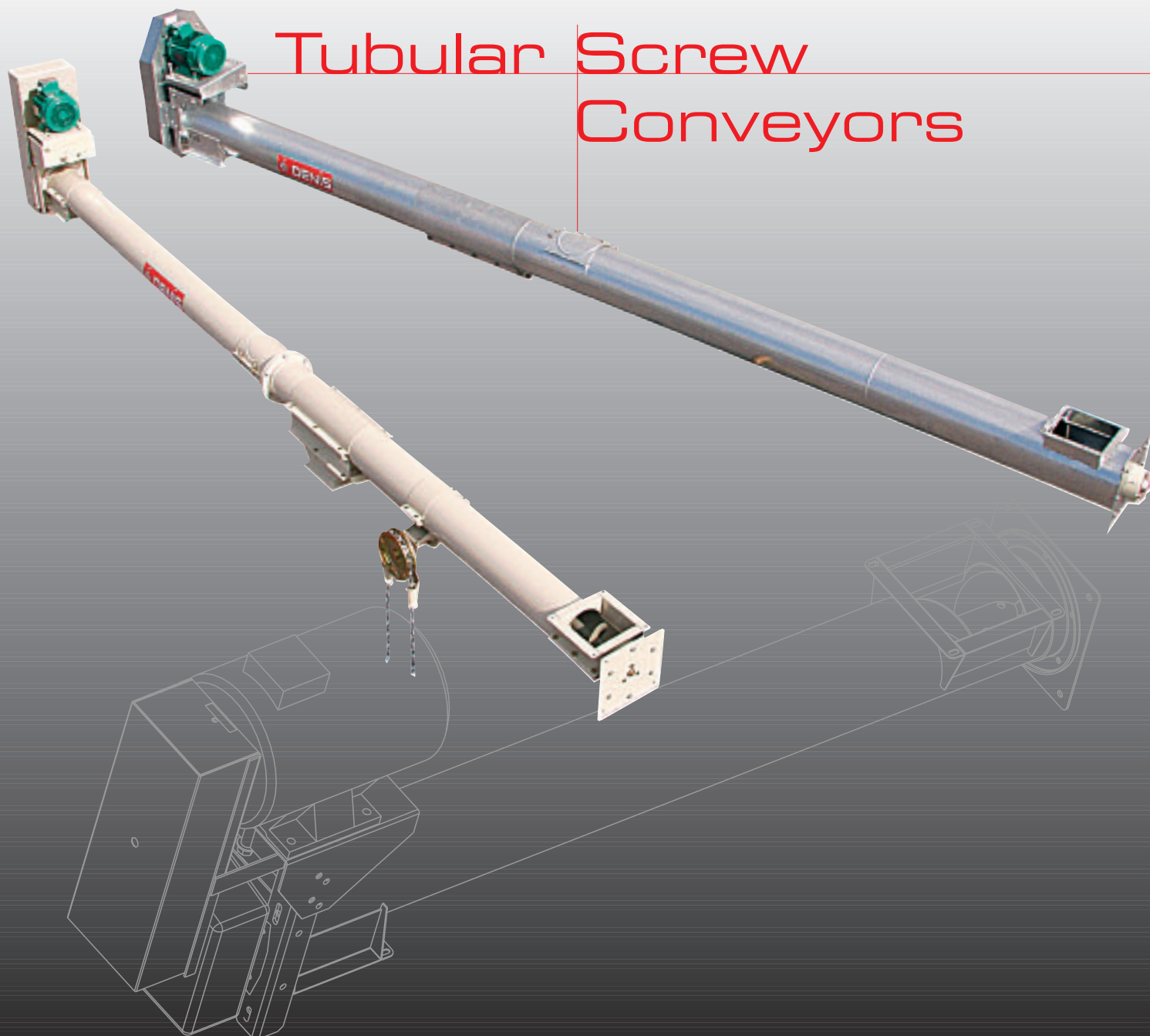




Tubular Screw Conveyors



General Description

The **DENIS** Tubular Screw Conveyors provide efficient conveying – whether in the horizontal or at an angle – of cereals, granules and many other products. These screw conveyors are widely used for product distribution and recovery, not only in agriculture but also for many industrial applications. They provide the following advantages:

Operation and performance: joined either by sleeve or flanges, this ensures strength and sealing whether working horizontally or at an angle, over a variety of lengths, the flight is entirely made in our own factory and can be fitted with different bearing types and drives

Reliable and adaptable: consistent throughputs, supplied in any length in multiples of 0.25 m with inlets and outlets positioned as required, and with drive position alternatives

Robust and economical: solid construction with reduced maintenance

Well designed quality machines: the 180°C oven baked paint finish is applied after a degreasing treatment followed by a phosphate primer for every component.

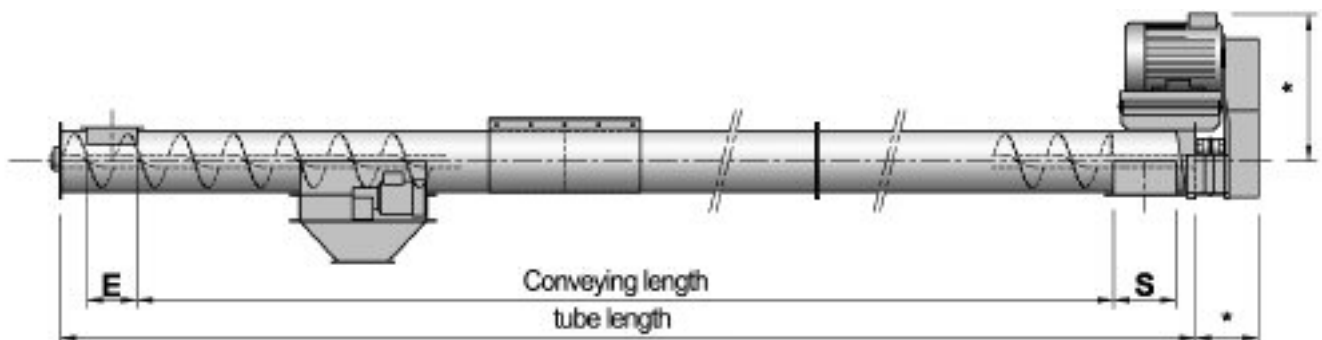
Optional: white food quality paint, hot dipped galvanise, stainless steel...

Safety: this equipment conforms with the European Standards for safety and strength and with **ATEX**, the European Explosion prevention requirements

Performance

Type	VH 160				VH 200			VH 240				VH 300		VH 400	
Conveyor working position	horizontal			Ind. 45°	horizontal		Ind. 45°	horizontal			Ind. 45°	Horizont	Ind. 45°	Horizont	Ind. 45°
Throughput in t/h (*)	15	20	30	20	30	40	35	30	40	60	50	100		200	
Speed RPM	265	380	520	520	230	435	435	230	230	414	414	203	325	230	325

On products with density of 750kg/m³



(*) This dimension is relevant to the installed motor power

Performance

Type	VH 160	VH 200	VH 240	VH 300	VH 400
Outer diameter of tube	Ø 160 mm	Ø 200 mm	Ø 240 mm	Ø 300 mm	Ø 406 mm
Flight diameter	Ø 130 mm	Ø 170 mm	Ø 210 mm	Ø 270 mm	Ø 373 mm
Pitch	130 mm	170 mm	210 mm	270 mm	373 mm
Maximum distance between bearings	2.50 m	3 m	3 m	3 m	6 m
Inlet and outlet dimensions	160 square 350 x 160 or 500 x 160 mm	200 square 500 x 200 mm	200 or 250 square 500 x 240 or 800 x 240 mm	300 square 500 x 250 or 800 x 310 mm	350 or 400 square 800 x 420 mm

A wide range of tubular screw conveyors, standard or specifically tailored, for the handling of all sorts of bulk products at different throughputs with different densities and particle size : cereals, fragile products, granules and powders, meals, flour and minerals, etc and similar products used in a diverse range of industries.

Characteristics

A Flight

welded onto centre tube and then accurately aligned

Options:

- Reduced pitch
- Left hand flight
- Continuously welded on one or both sides
- Flight without bearings
- Hot dipped galvanise finish
- White food quality finish
- Alternative diameters and thicknesses available
- With paddle blade discharge

B Tail End

with bearing (sealed bearing as standard on inclined conveyors)

Option:

- Use of sealed bearings on horizontal application or special bearings

C Intermediate Bearings

with access hatch to the bearing

D Head End with drive

have bearings unless supplied with gearboxes or geared motors

Option:

- Use of sealed or special bearings

E Drive

either through shaft mounted gearbox (depending upon RPM), by pulleys and VEE belt, or geared motor with chain and pinion drive on the VH 400

Options:

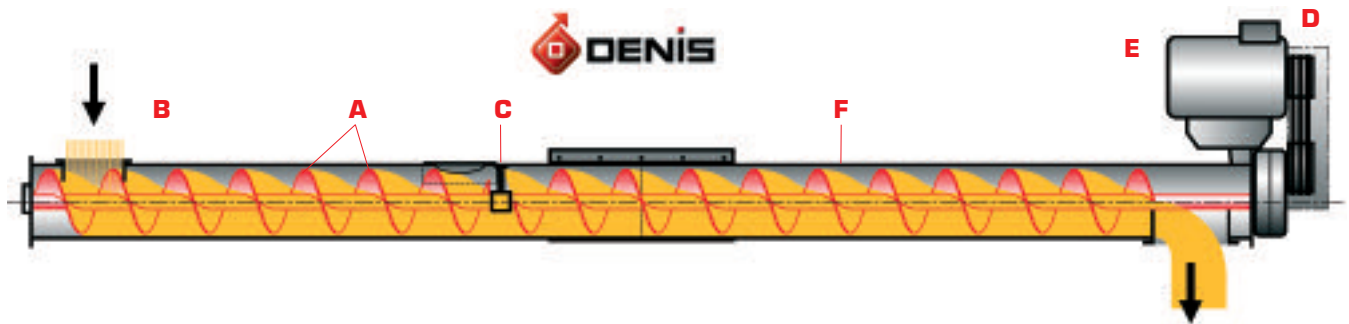
- Different speeds and drives to suit requirements
- Shaft mounted geared motor
- Geared motor drive in line with flexible coupling
- Variable speed by inverter

F Tube

continuously welded. Joined by flanges (VH 160) or by sleeves for the other conveyors

Options:

- Alternative tube thicknesses
- Sealed flange joints
- Clean out slides (drop-bottoms)



Steelwork

oven baked paint finish

Options:

- Galvanised finish
- White food quality
- Stainless steel 304L, 316L

Intermediate Outlets (for horizontal usage)

with control slides

- Electrical
- Electro-pneumatic
- Manual - by handwheel
- chain operated



This equipment meets with the standards for safety and strength



This equipment conforms to the **ATEX** requirements

Accessories

- Connections, pipework, mobility
- Safety: speed sensors, choke relief with microswitch, temperature sensors

Applications

There are different specifications suited to a number of applications

Agro-cereal sector

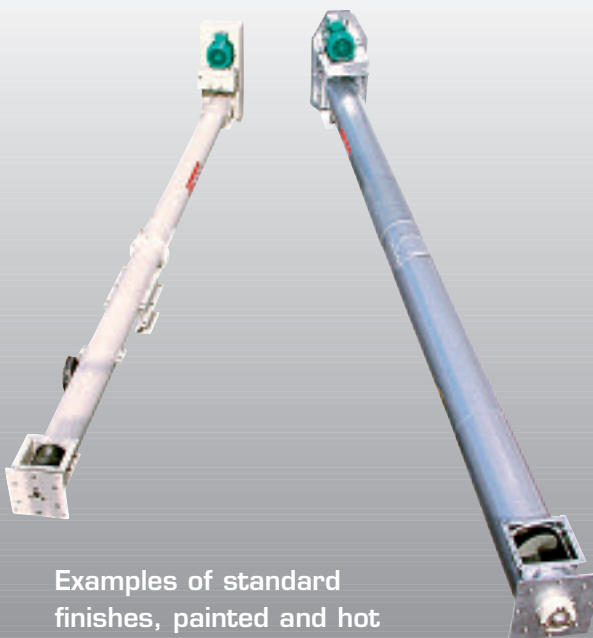
- Agriculture
- Commercial grain
- Animal feeds
- Milling, etc

Industrial sector

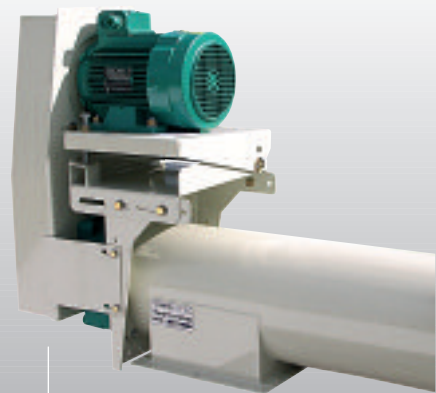
- Minerals
- Fertilizer, etc



Drive unit with motor, pulleys and belts



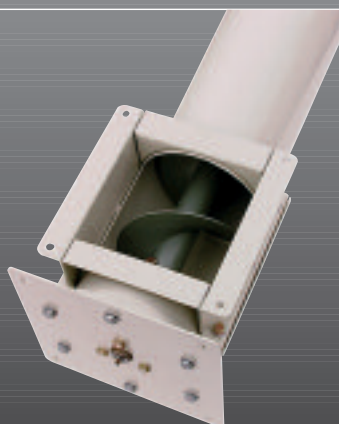
Examples of standard finishes, painted and hot dipped galvanised



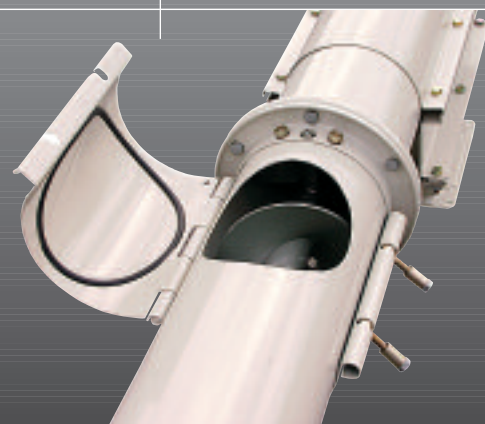
Drive unit with motor, shaft mounted gearbox, pulleys and belts



Intermediate outlet with longitudinal slide, chain operated



Tail end with inlet



Intermediate bearing at each joint with inspection hatch and grease nipple



Avenue Louis-Denis - 28160 Brou - France
Phone 33 (0)2 37 97 66 11 • Fax 33 (0)2 37 97 66 40
www.denis.fr



The characteristics related to this documentation are given as an indication only and can be modified at any time without notice to improve the product. The manufacturer cannot in any way be held responsible for this changes.